

***Aim Higher Post 16  
Religious Studies Conference 2014***

**Thursday, March 27<sup>th</sup> 2014  
At St John's College, Bramcote**

**The Day's Programme**

<b>9.15 - 9.30am</b>	<b>Arrival &amp; Registration</b>
<b>9.30 - 10.30</b>	<b>Welcome     <i>Euthanasia – Dr Simon Oliver</i></b>
<b>10.30 - 10.45</b>	<b>Break – Refreshments</b>
<b>10.45 - 11.30</b>	<b><i>Darwinism – Dr Conor Cunningham</i></b>
<b>11.30 - 11.45</b>	<b>Break</b>
<b>11.45 - 12.30</b>	<b><i>The Teleological Argument – Dr Simon Oliver</i></b>
<b>12.30 – 1.15</b>	<b>Lunch</b>
<b>1.15 – 1.45</b>	<b><i>The Next Step: University Education – Peter Watts &amp; University undergraduate students</i></b>
<b>1.45 – 2.15</b>	<b><i>How to prepare for writing examination answers - Ms Lynsey Wilkinson. Specialist Leader in RE</i></b>
<b>2.20 - 3.00</b>	<b>A debate by students on “Science is the new god?”</b>
<b>3.00 - 3.15</b>	<b>Courses at St John's College</b>

**A study day offered by:-**

**Nottinghamshire SACRE,  
St John's College,  
The University of Nottingham Theology Department  
& the RSResource Centre**

## Who is leading our sessions in 2014?

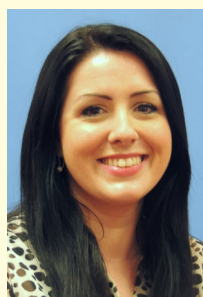
### **Dr Conor Cunningham -**

Associate Professor of Theology & Philosophy at the University of Nottingham. He has written and presented an award-winning documentary BBC2 documentary 'Did Darwin Kill God' and his most recent book is entitled 'Darwin's Pious Idea: Why the Ultra-Darwinists and Creationists Both Get it Wrong.' Conor has recently been part of an international, multi-disciplinary research team working on the question of 'evolution and human nature.'



**Dr Simon Oliver** is Head of the Department of Theology & Religious Studies at the University of Nottingham and Associate Professor of Philosophical Theology. His areas of expertise include the Christian doctrine of creation, the influence of Plato and Aristotle on Christian theology, the thought of Thomas Aquinas, the history of the relationship between theology and science, and philosophy of religion in the continental and analytic traditions.

**Peter Watts** is Admissions Tutor in the Department of Theology and Religious Studies at the University of Nottingham and Teaching Associate in Biblical Studies.



**Ms Lynsey Wilkinson** Specialist Leaders of Education for RE in Nottinghamshire and teaches at the Redhill Academy. She has worked with the RE Council on the Young Ambassadors for RE scheme.

Cost: £25 per delegate includes lunch & refreshments

£17 Lunch & refreshments not included

Teachers attending without students are welcome as part of their CPD but the charge will be £50 (these places are limited and include lunch)

For every 10 students at the full rate, from a school, member of staff attends at no charge.

Students must be accompanied by a member of staff or a parent. We cannot accept bookings for unaccompanied students, all students attending are required have a supervising teacher, or parent, with them. This is a workplace health and safety issue, as we do not have the necessary staff to provide supervision of students at the conference, or during meal breaks

***This is a self financing conference***